

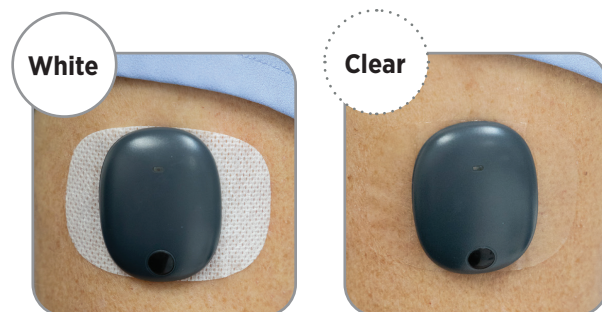
Adhesives Tips



It is important to keep your Eversense Smart Transmitter firmly in place over the sensor. Extra support may be needed for sports, during heavy perspiration, or restless sleep. Also, some people might need options for skin irritation due to the adhesive. **The tips below can help to address these concerns. You may need to try different options until you find the one that works best for you.**




General Tips

- Start with clean, dry skin. Remove any lotion or soap prior to placing adhesive patch and smart transmitter.
- Your kit comes with 90 white and 10 clear adhesive patches and you should try both. The white is perforated and may be better at wicking away moisture. The clear is optimal for discretion. Both types are hypoallergenic, use a medical grade non-reactive silicon adhesive, and do not include natural rubber latex.
- If any skin irritation persists, consult with your health care provider for additional treatment options.



Other Available Products and Options







All products should be used together with the Eversense adhesive patch.

Product	How It Works	May provide extra skin adherence	May help decrease skin irritation	Tips
SKIN-PREP® or No-Sting SKIN PREP (Smith & Nephew) 	<ul style="list-style-type: none"> • Creates thin, tacky layer on the skin • Provides a barrier to skin moisture 	✓	✓	<ul style="list-style-type: none"> • Use only after incision is fully healed • Let dry completely before applying the adhesive patch and smart transmitter
SKIN TAC™ Adhesive Barrier Wipe 	<ul style="list-style-type: none"> • Creates thin, tacky layer on the skin • Provides a barrier to skin moisture 	✓	✓	<ul style="list-style-type: none"> • Use only after incision is fully healed • Let dry completely before applying the adhesive patch and smart transmitter • May need to use an alcohol wipe to assist with removing product
Smith & Nephew IV 3000 1-Hand transparent dressing 	<ul style="list-style-type: none"> • Physical barrier between skin and adhesive patch • Hypoallergenic 	✓	✓	<ul style="list-style-type: none"> • Hypoallergenic, physical barrier between skin and adhesive patch • Comes in different sizes: 2 3/8" x 2 3/4" and 4" x 4 3/4"



Adhesive Tips



Product	How It Works	May provide extra skin adherence	May help decrease skin irritation	Tips
Benadryl® Antihistamine Spray 	<ul style="list-style-type: none"> Creates a thin barrier on the skin Calms the skin 	✓	✓	<ul style="list-style-type: none"> Use only after incision is fully healed Apply thin layer, wait 10 minutes Wipe off any excess and then apply adhesive patch and smart transmitter
Non-adhesive Wraps (Coban, Ace) 	<ul style="list-style-type: none"> Extra support for holding smart transmitter and adhesive patch in place 	✓		<ul style="list-style-type: none"> Do not wrap too tightly to avoid excessive tissue compression
KT Tape® Kinesiology Therapeutic Tape 	<ul style="list-style-type: none"> Extra support for holding smart transmitter and adhesive patch in place Gentle on skin 	✓		<ul style="list-style-type: none"> Elastic sports tape may be stretched as needed to fit arm comfortably Gentle on skin
GRIFGRIPS®  <p>Strip Grip Wing Grip</p>	<ul style="list-style-type: none"> Extra support for holding smart transmitter and adhesive patch in place Specifically designed for Eversense Smart Transmitter 	✓		<ul style="list-style-type: none"> To view colors, patterns, and designs, go to https://www.grifgrips.com/
EversenseFix 	<ul style="list-style-type: none"> Extra support for holding smart transmitter and adhesive patch in place Specifically designed for Eversense Smart Transmitter 	✓		<ul style="list-style-type: none"> Order at https://www.diastuff.de/en/produkt/eversensefix-the-optimal-fixation-for-your-eversense-xl-transmitter/
Unscented solid or spray antiperspirant (not deodorant) 	<ul style="list-style-type: none"> Prevents moisture from perspiration 	✓		<ul style="list-style-type: none"> Prevents perspiration Apply thin layer, wait 10 minutes, wipe off any excess and then apply adhesive patch and smart transmitter

References: Messer L, Beatson C. Preserving Skin Integrity with Chronic Device Use in Diabetes. Diabetes Technology & Therapeutics 2018; 20 Suppl 2. Tsai, A. Tips for Tackling Adhesive Irritation and Allergies. Diabetes Forecast, 2017 March.

Eversense, Eversense Continuous Glucose Monitoring, Eversense CGM, Eversense Sensor, Eversense Smart Transmitter, Eversense App and the Eversense logo are trademarks of Senseonics, Incorporated. Other brands and their products are trademarks or registered trademarks of their respective holders.

The Eversense® Continuous Glucose Monitoring (CGM) System is indicated for continually measuring glucose levels in persons age 18 and older with diabetes for up to 90 days. The system is indicated for use to replace fingerstick blood glucose (BG) measurements for diabetes treatment decisions. Fingerstick BG measurements are still required for calibration twice per day, and when symptoms do not match CGM information or when taking medications of the tetracycline class. The sensor insertion and removal procedures are performed by a health care provider. The Eversense CGM System is a prescription device; patients should talk to their health care provider to learn more. For important safety information, see <https://eversensed diabetes.com/safety-info/>.



Continuous Glucose Monitoring System

MANUFACTURED BY:
SENSEONICS, INC.

20451 Seneca Meadows Parkway | Germantown MD 20876-7005 | USA
301.515.7260 | global.eversensed diabetes.com



DISTRIBUTED BY:
ASCENSIA DIABETES CARE US, INC.
5 Wood Hollow Road | Parsippany NJ 07054 | USA
+1.862.225.2902 | ascensia.com